

The Indisys™ Management Suite is a software toolkit providing complete management of control room visual information. It enables a variety of display formats to be combined into a cohesive solution. With the Indisys Management Suite, users control set-up, source acquisition and display, video wall operation, and system monitoring. Fully integrated with Planar's in-cube processing solution, the Indisys Management Suite simplifies and enhances the operation of Clarity Integrated displays in demanding control room environments. It provides control over key data such as event triggers, drag and drop sources, layouts and live source/video wall thumbnails. It includes a System Builder tool, the Indisys Director wall management module, a PLI Manager, and a sophisticated graphical System Monitoring application. Powerful and easy to use, the Indisys Management Suite takes full advantage of Planar's latest generation Indisys image processing hardware featuring the innovative, new, Indisys Packet Protocol (IP2), a high-speed digital transport protocol.



FEATURES

End-to-End Control

Monitors and controls from source to video wall

Efficient Design

User Interface organized for quick access to different functions

Flexible Display Support

Supports Planar integrated displays, 3rd party displays and Clarity Matrix displays

Saved Views

Presets make it easy to transition between views

Complete Monitoring

Automates the monitoring of complete systems

Easy Integration

API for simple 3rd party product integration

INDISYS™ MANAGEMENT SUITE

Indisys Director Features

GUI Features:

- Point and click, drag and drop
- Preset thumbnail preview
- Live source thumbnail preview
- Live wall preview

Work Flow Benefits:

- Source & wall snapshot management
- Preset, source and application window management
- Tabbed UI for improved information organization
- System status reporting
- Work flow management through event triggers

Video Wall Management:

- Manual color balance & brightness control
- Set it and Forget it (SiFi™) auto color balance
- Lamp switching & power control

System Control:

- Source configuration and maintenance
- Interface to 3rd party matrix switchers
- Touch screen and 3rd party interfacing for remote control
- Multi-user support
- Multi-language support

PLI Control

- Via PLI Manager
- Drag and drop, point and click source and layout control
- Preset thumbnail preview
- Live source thumbnail preview
- System status reporting
- Runs as client to Indisys Director

System Monitoring - Intuitive Web interface for local and remote access

- Monitors Indisys Components (Image Gateway, Multi-Image Gateway, Image Hub, Image Master, PLI and Clarity Integrated displays)
- User profile management
- Event and trigger management
- Remote source thumbnails
- Remote wall view with graphical indicators for component health
- Configuration preview
- Temperature, fan speed, and lamp life monitoring
- Error detection and notification

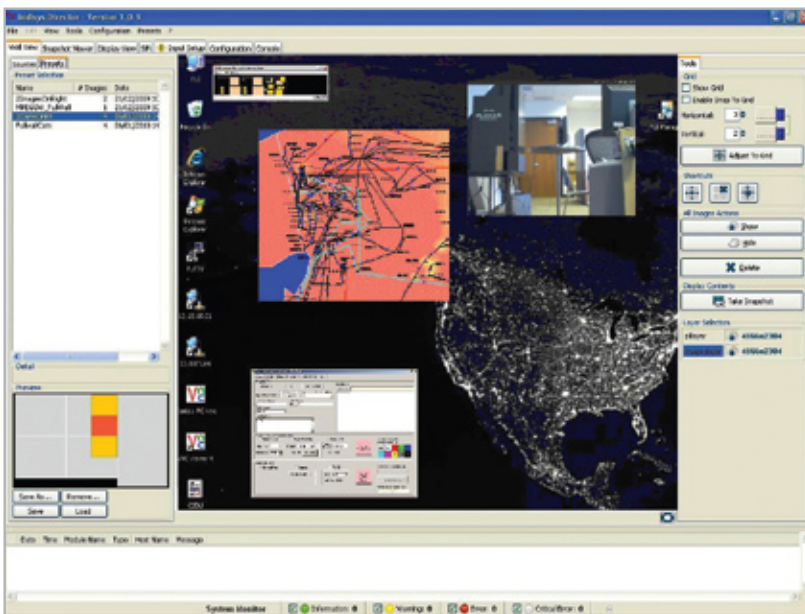
INDISYS™ MANAGEMENT SUITE

System Requirements

- Linux , Windows (2000, XP, 2003 Server)
- Runs on independent control PC
- Minimum Celeron D 2GHz
- Minimum 512M RAM
- Minimum 80G HD

Indisys Management Suite in Action

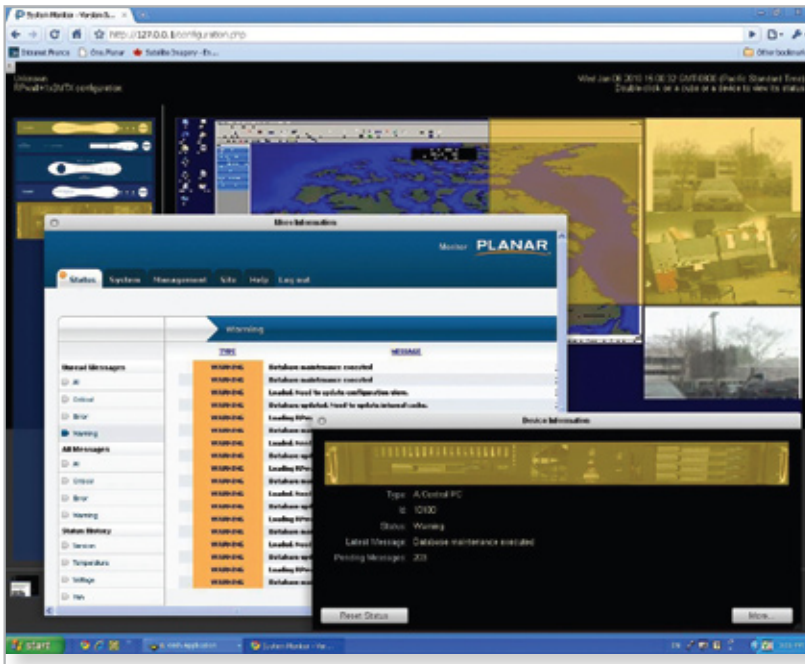
Indisys Director source and preset preview with drag and drop user interface.



For more information

To learn more about the Indisys™ Management Suite by Planar Systems, call 503-748-1100 or visit www.planarcontrolroom.com.

System Monitoring, showing view of system configuration with drilldown data analysis.



When image experience matters.

Planar Systems, Inc.
1195 NW Compton Drive
Beaverton, OR, 97006-1992, USA
Toll Free +1-866-475-2627
www.planar.com

Planar is a trademark of Planar Systems, Inc. All other trade and service marks are the property of their holders.

Copyright © 2010 Planar Systems, Inc. All rights reserved. This document may not be copied in any form without written permission from Planar Systems, Inc. Information in this document is subject to change without notice.